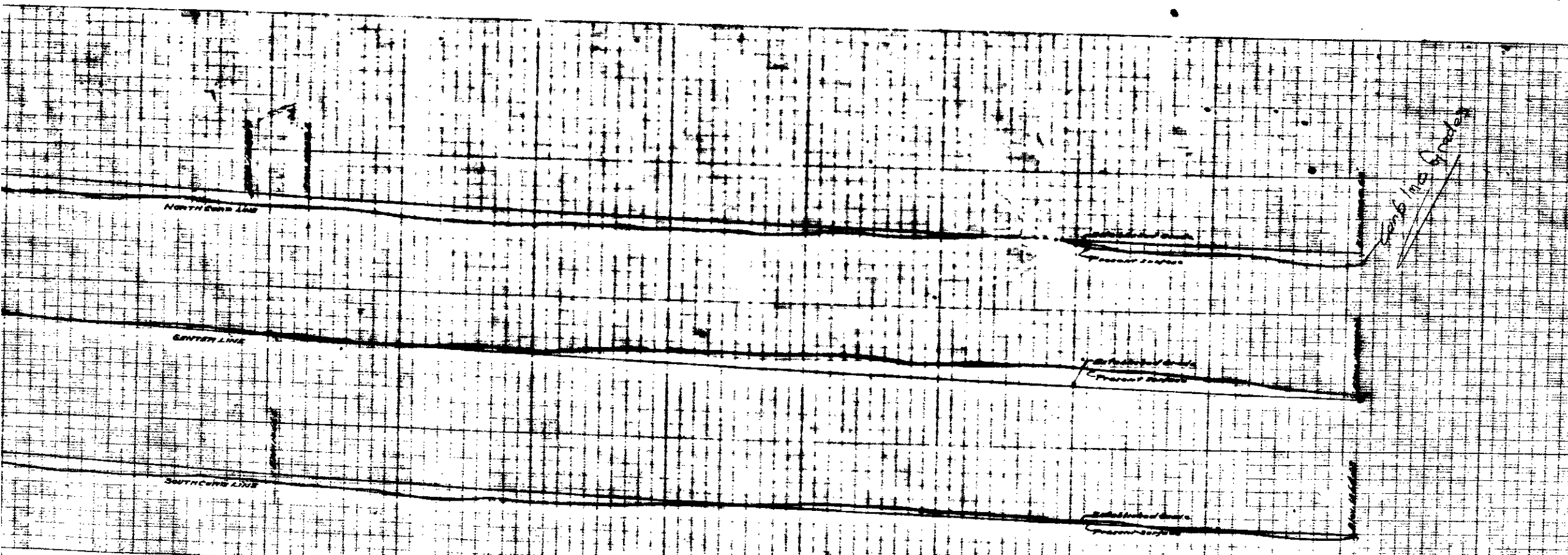
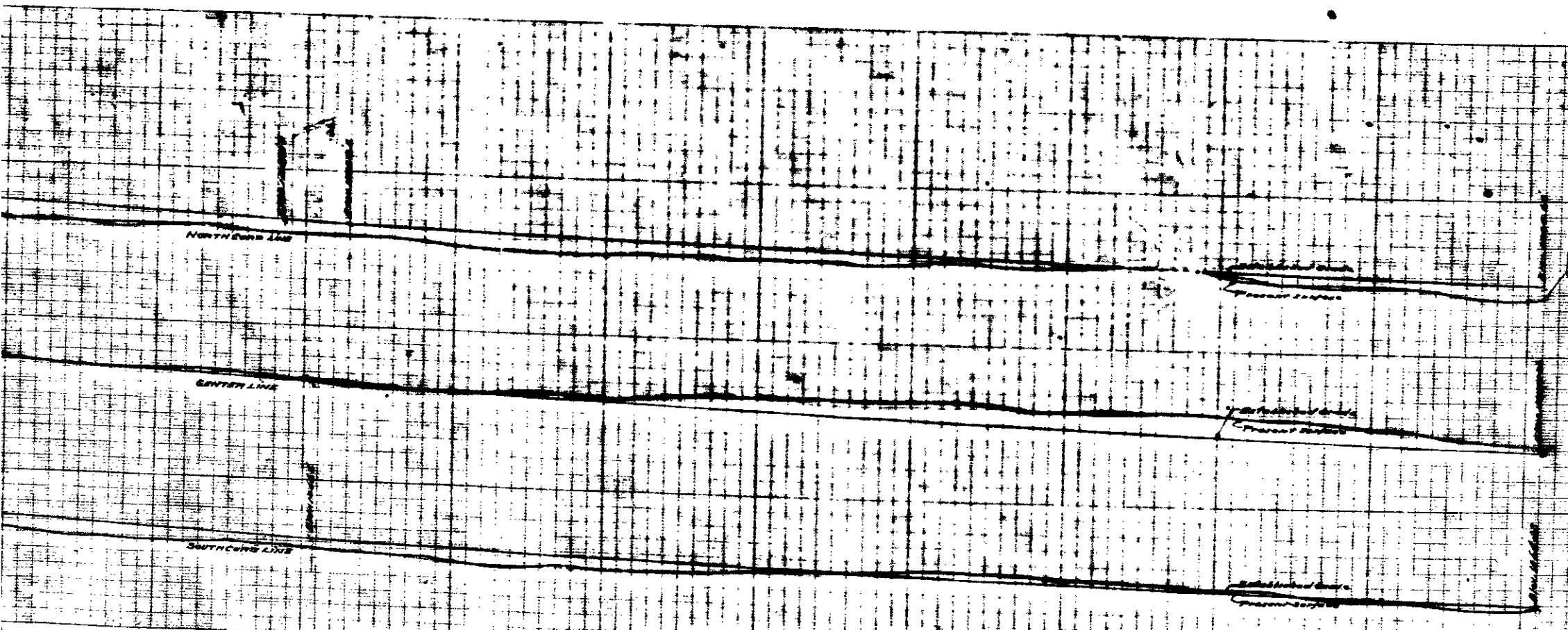
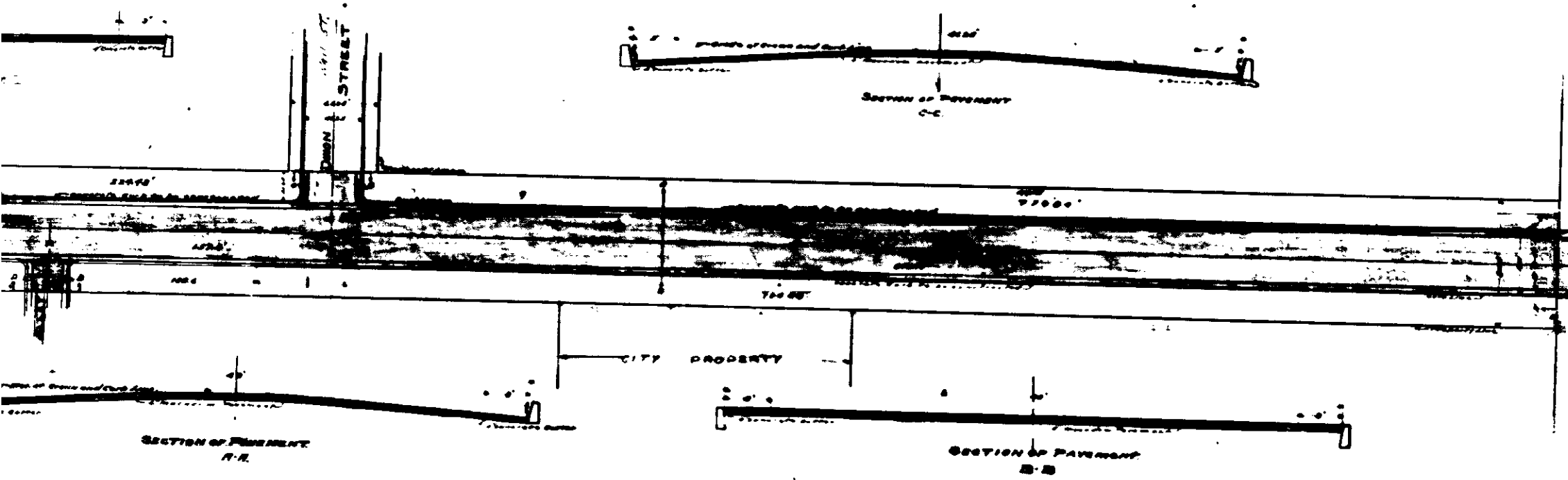


PLAN 481-A  
 For the improvement of  
**NINTH ST.**  
 FROM  
**EAST LINE OF A STREET**  
 TO  
**WEST LINE OF WATERMAN AVE.**  
 CITY OF SAN BERNARDINO  
 CALIFORNIA

September 1915  
 Scale 1"=40'  
 C. C. Johnson  
 CITY ENGINEER

**LEGEND.**  
 To be made as follows:  
 1. Street  
 2. Road  
 3. Avenue  
 4. Highway  
 5. Waterway  
 6. Railway  
 7. Canal  
 8. Drain  
 9. Sewer  
 10. Gas  
 11. Electric  
 12. Telephone  
 13. Fire  
 14. Gas  
 15. Electric  
 16. Telephone  
 17. Fire  
 18. Gas  
 19. Electric  
 20. Telephone  
 21. Fire  
 22. Gas  
 23. Electric  
 24. Telephone  
 25. Fire  
 26. Gas  
 27. Electric  
 28. Telephone  
 29. Fire  
 30. Gas  
 31. Electric  
 32. Telephone  
 33. Fire  
 34. Gas  
 35. Electric  
 36. Telephone  
 37. Fire  
 38. Gas  
 39. Electric  
 40. Telephone  
 41. Fire  
 42. Gas  
 43. Electric  
 44. Telephone  
 45. Fire  
 46. Gas  
 47. Electric  
 48. Telephone  
 49. Fire  
 50. Gas  
 51. Electric  
 52. Telephone  
 53. Fire  
 54. Gas  
 55. Electric  
 56. Telephone  
 57. Fire  
 58. Gas  
 59. Electric  
 60. Telephone  
 61. Fire  
 62. Gas  
 63. Electric  
 64. Telephone  
 65. Fire  
 66. Gas  
 67. Electric  
 68. Telephone  
 69. Fire  
 70. Gas  
 71. Electric  
 72. Telephone  
 73. Fire  
 74. Gas  
 75. Electric  
 76. Telephone  
 77. Fire  
 78. Gas  
 79. Electric  
 80. Telephone  
 81. Fire  
 82. Gas  
 83. Electric  
 84. Telephone  
 85. Fire  
 86. Gas  
 87. Electric  
 88. Telephone  
 89. Fire  
 90. Gas  
 91. Electric  
 92. Telephone  
 93. Fire  
 94. Gas  
 95. Electric  
 96. Telephone  
 97. Fire  
 98. Gas  
 99. Electric  
 100. Telephone





PLAN 481-A  
 For the improvement of  
**NINTH ST.**  
 FROM  
**EAST LINE OF 7th STREET**  
 TO  
**WEST LINE OF WATERMAN AVE.**  
 CITY OF SAN BERNARDINO  
 CALIFORNIA

Sept 27, 1948

Scale 1"=40'

**LEGEND.**  
 To be made as shown  
 1" = 40' - 1" = 40' - 1" = 40'  
 3" = 120' - 3" = 120' - 3" = 120'  
 1/2" = 20' - 1/2" = 20' - 1/2" = 20'  
 1/4" = 10' - 1/4" = 10' - 1/4" = 10'  
 1/8" = 5' - 1/8" = 5' - 1/8" = 5'  
 1/16" = 2.5' - 1/16" = 2.5' - 1/16" = 2.5'  
 1/32" = 1.25' - 1/32" = 1.25' - 1/32" = 1.25'

Handwritten note: *1/2" = 10'*